

## Roll-N-Pull

### Installation Instructions and Parts List

Attention Dealers:  
Please give this manual to  
the customer when the  
product is delivered.

# Roll-N-Pull



## Table of Contents

Description .....	Page No.
Table of Contents & Warning .....	1
STEP 1 - Installation of Mounting Plates .....	2
STEP 2 - Installation of Tarp Roll-up Bar Assembly.....	3
Roll-up Bar Assembly Schematic & Parts List .....	5
Operating the Roll-N-Pull .....	6
Roll-N-Pull Schematic .....	7
Roll-N-Pull Parts List.....	8
Periodic Maintenance Schedule .....	9
Recommended Safety Issues .....	9

### **WARNINGS**

This manual is intended for personnel who are going to install or operate the Roll-N-Pull Tarp System; read the manual prior to use of the Roll-N-Pull Tarp System in any way or perform any actions on it. This manual contains important information about the following points: 1) system installation, 2) operating instructions, 3) recommended maintenance issues.

Aero Industries has used appropriate materials and construction techniques in relation to the specified use of the Roll-N-Pull Tarping System in order to manufacture a reliable and safe product. The use of, or substitution of alternate materials by the person performing the installation is prohibited unless authorization is obtained from Aero Industries. Any required modifications to the dump body must be approved by the manufacturer prior to making those modifications.

Aero Industries hereby refuses to accept any responsibility for injury to persons or damage to equipment or property if it appears that incorrect installation or operation has taken place. Operation of this system is to be performed by authorized personnel only. This manual only describes the operating and safety aspects which persons who are installing the system need to know. In order to understand the terminology used in this manual, it is necessary that the person performing the installation work should have specific experience in Truck/Trailer work, service/repair, and maintenance activities, and also possess the ability to explain this installation manual to other people. At the same time they must be aware of the general and specific safety regulations which apply. If the person performing the installation of this product is not the end user of this product, it shall be the responsibility of the person performing the installation to assure the end user has received all information contained in the manual, and is fully aware of all contents within this manual.

# Roll-N-Pull

## STEP 1

### How to Install the Mounting Plates

#### Parts you will need:

**Mounting Plate Drivers Side (1)**

**Mounting Plate Passenger Side (1)**

**3/8" x 1" HHCS Bolts (4)**

**3/8" Flat Washer (4)**

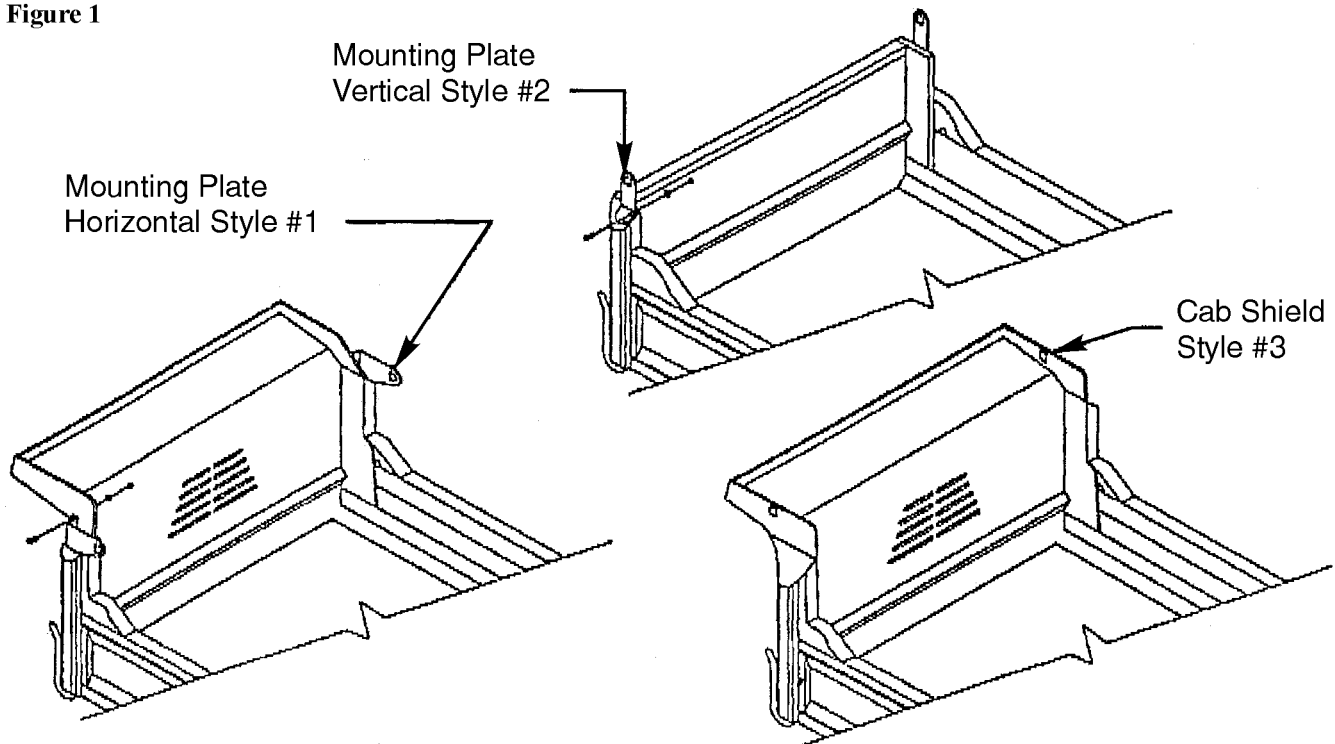
**3/8" Hex Nut with Nylon Insert (4)**

**NOTE:** All three styles of cab shields are shown in **Figure 1**. Prior to installation, check your dump body to make sure you have the correct mounting plates required for your style cab shield. If your cab shield looks like **Style #3** represented in **Figure 1**,

then skip **STEP 1** and proceed to **STEP 2**.

1. Align the holes in the drivers side mounting plate with the holes located in the drivers side of the cab shield. Install the drivers side mounting plate on the outside of the cab shield using the 3/8" x 1" bolts. Use the bolts, washers, and hex nuts provided, and make sure all fasteners are tightened securely.
2. Align the holes in the passenger side mounting plate with the holes located on the passenger side of the cab shield. Install the passenger side mounting plate on the outside of the cab shield using the 3/8" x 1" bolts. Use the bolts, washers, and hex nuts provided, and make sure all fasteners are tightened securely.

**Figure 1**



## STEP 2

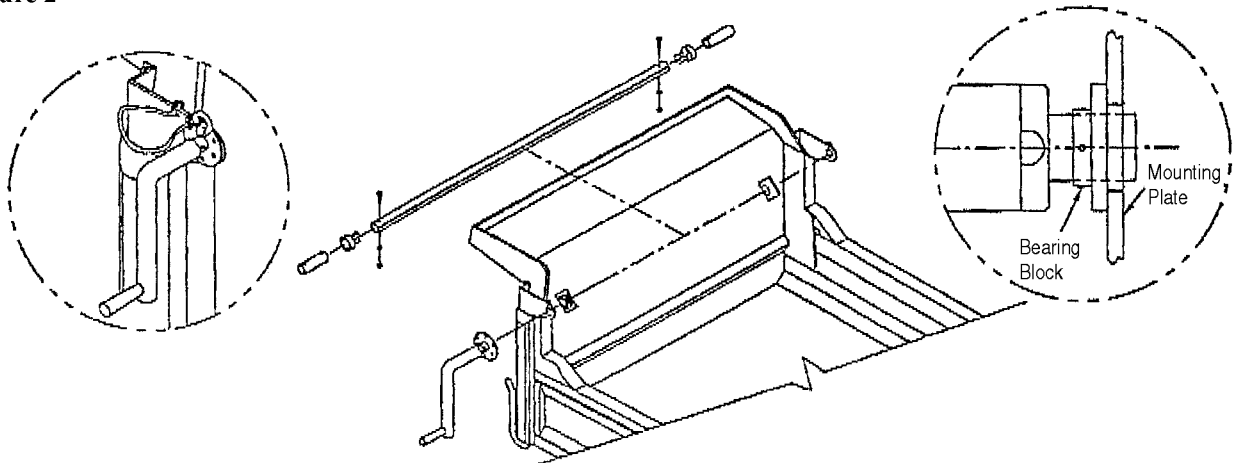
### How to Install the Tarp Roll-up Bar Assembly

#### Parts you will need:

- Crank Handle Assembly (1)*
- Roll Bar (78", 84", 87", or 93") (1)*
- Roll Bar End (2)*
- Passenger Side Shaft (1)*
- Drivers Side Shaft (1)*
- 1/4"-20 x 2-1/2" Bolt (2)*
- 1/4" Flat Washer (8)*
- 1/4"-20 Hex Nut - Nylon Insert (3)*
- 1/4"-20 x 1-1/2" Bolt (1)*
- Plastic Bearing Block (2)*
- Washer Collar (1)*
- 1" Split Ring (2)*
- Plastic Lanyard (1)*
- 5/16" x 1-3/8" Lynch Pin (1)*
- 3/8" Flat Washer (4)*
- 3/8" Hex Nut with Nylon Insert (4)*
- 1/4" Square Nut (6)*

1. Reference **Figure 2**. Obtain the appropriate length roll-up bar, roll bar end, passenger side shaft, 1/4"-20 x 2-1/2" bolt, two (2) 1/4" flat washers, and a 1/4" hex nut. Install the roll bar end into the end of the passenger side of the roll-up bar. Then take the passenger side shaft, and install it into the inside of the roll-up bar end piece. Align the holes in the roll-up bar end, and the hole in the passenger side shaft. Place the 1/4" flat washer onto the 1/4"-20 x 2-1/2" bolt. Insert the 1/4"-20 x 2-1/2" bolt into the 1/4" holes going through the roll-up bar, roll-up bar end, and drivers side shaft. Install a 1/4" flat washer onto the 1/4"-20 x 2-1/2" hex nut until they are secure.
2. Install the plastic bearing block into the square hole in the passenger side mounting plate.
3. Obtain the six (6) 1/4"-20 square nuts, and install them into the longitudinal groove in the roll-up bar. Install the other roll-up bar end into the driver side of the roll-up bar. Then slide the passenger side end of the roll-up bar into the plastic bearing block on the passenger side mounting plate.
4. Install the other plastic bearing block into the square hole in the driver side mounting plate.
5. Obtain the drivers side shaft, 1/4"-20 x 2-1/2" bolt, two (2) 1/4" flat washers, and a 1/4" hex nut. Take the drivers side shaft and install it through the drivers side plastic bearing block, and into the inside of the roll-up bar end piece. Align the holes in the roll-up bar end, and the hole in the drivers side shaft. Place the 1/4" flat washer onto the 1/4"-20 x 2-1/2" bolt. Insert the 1/4"-20 x 2-1/2" bolt into the 1/4" holes going through the roll-up bar, roll-up bar end, and drivers side shaft. Install a 1/4" flat washer onto the 1/4"-20 x 2-1/2" hex nut until they are secure.
6. Slide the washer/collar over the drivers side shaft with the collar on the washer/collar facing outward. Mark the location of the set screw holes in the collar onto the drivers side shaft using the holes in the collar as a guide. Slide the washer/collar out of the way and drill two (2) 1/4" drill points at the locations marked on the drivers side drive shaft. Relocate the washer/collar onto the drivers side shaft, and align holes in washer/collar with the drill pints you just drilled. Install the set

Figure 2

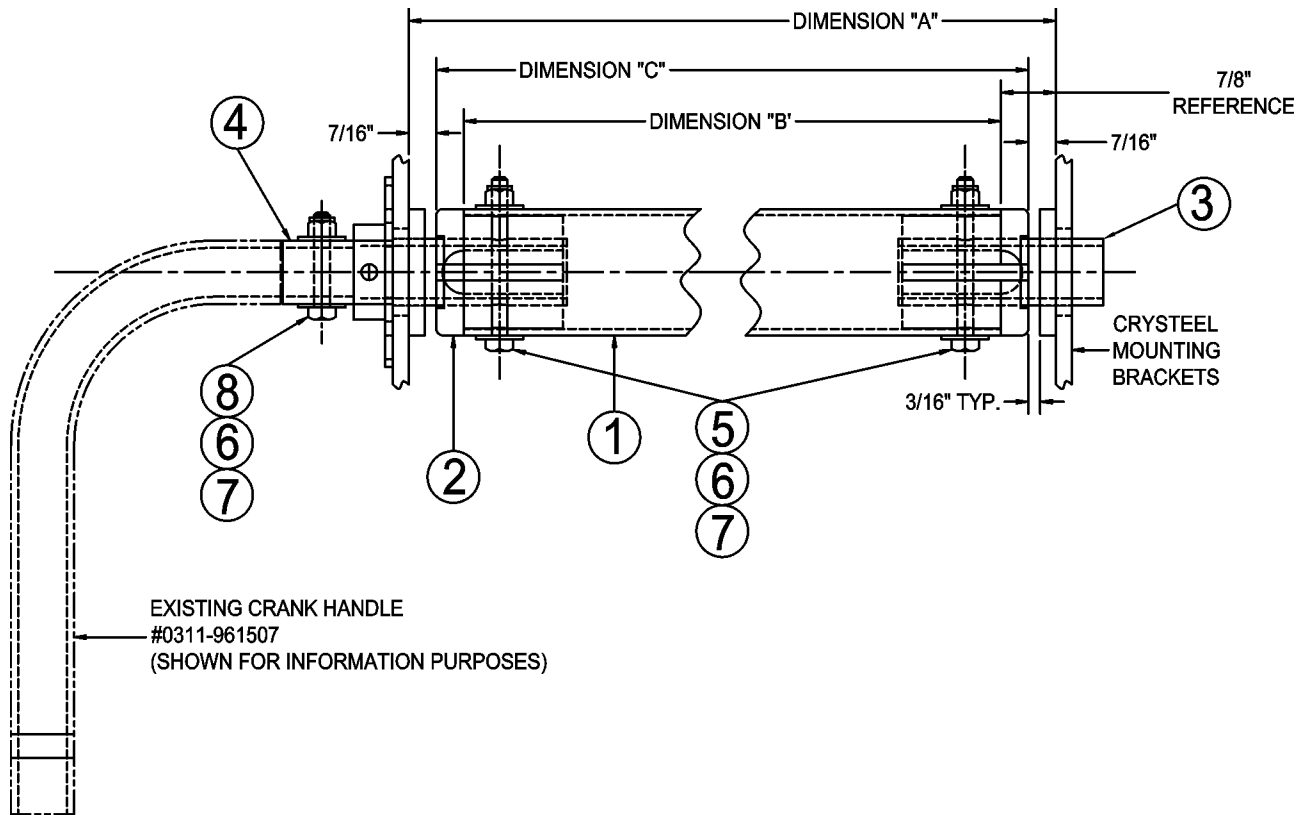


# Roll-N-Pull

screws into the washer/collar, and into the drivers side shaft until tight.

7. Obtain the crank handle assembly, 1/4"-20 x 1-1/2" bolt, two (2) 1/4" flat washers, and a 1/4" hex nut with nylon insert. Install the crank handle assembly onto the end of the drivers side shaft, and align the 1/4" holes in both. Install a 1/4" flat washer onto the 1/4"-20 x 1-1/2" bolt. Insert the 1/4"-20 x 1-1/2" bolt through the 1/4" diameter holes in the crank handle assembly, and the drivers side shaft. Install the 1/4" hex nut onto the bolt, and tighten until they are secure.
8. Obtain the two (2) 1" split rings, plastic lanyard, and 5/16" lynch pin. Connect one of the 1" split rings onto the end of the 5/16" lynch pin, and the loop in the plastic lanyard. Connect the second 1" split ring to the other end of the lanyard, and through the 1/4" hole in the drivers side mounting plate. When the tarp is being stored in the covered or uncovered position, line up one of the holes in the washer/collar and the mounting plate hole. Pin the two pieces together and snap the ring of the lynch pin over the tab on the mounting plate. This will keep the crank handle assembly and roll-up bar from turning and, consequently, the tarp from unwinding.

## Roll-up Bar Assembly Schematic



## Roll-up Bar Parts List

Item No.	Part Description	Qty. Req.	78" Kit Part Number #0311-960221	84" Kit Part Number #0311-960222	87" Kit Part Number #0311-960223	93" Kit Part Number #0311-960224
1	Roll Bar	1	0311-86304	0311-861305	0311-861306	0311-861307
2	Roll Bar End	2	0311-860512	0311-860512	0311-860512	0311-860512
3	Shaft Pass. Side	1	0311-860510	0311-860510	0311-860510	0311-860510
4	Shaft Drivers Side	1	0311-860511	0311-860511	0311-860511	0311-860511
5	Bolt HHCS 1/4"-20 x 2-1/2" CR 5	2	0810-650468	0810-650468	0810-650468	0810-650468
6	Flat Washer 1/4" Zinc	6	0820-680410	0820-680410	0820-680410	0820-680410
7	Nut 1/4"-20 NYLOC	3	0815-660451	0815-660451	0815-660451	0815-660451
8	Bolt HHCS 1/4"-20 x 1-1/2" GR 5	1	0810-650479	0810-650479	0810-650479	0810-650479
"A"	Roll Bar End	X	77-55/16"	83-55/16"8	86-55/16"	92-55/16"
"B"	Roll Bar End	X	76-3/16"	82-3/16"	85-3/16"	91-3/16"
"C"	Roll Bar End	X	77-3/16"	83-3/16"	86-3/16"	92-3/16"

# Roll-N-Pull

## Operating the Roll-N-Pull

### Covering your Dump Body:

1. Remove the lynch pin which is locking the crank handle assembly to the front drivers side mounting plate.
2. Manually pull the tarp to the rear of the dump body and insert the rear pull bar into the rear catches.
3. Go back to the front of the dump body and crank the crank handle assembly so the excess tarp rolls up on the front roll-up bar until the tarp is taut.
4. Reinstall the lynch pin into the washer/collar to lock the crank handle assembly into place by snapping the ring of the lynch pin over the tab on the mounting plate.

**⚠ WARNING: Injury to persons or damage to equipment or property can occur if tarp is not taut in the covered position. tarp must be taut at all times, or rear pull bar could possibly come loose from rear catches.**

### Un-covering your Dump Body:

1. Remove the lynch pin which is locking the crank handle assembly to the front drivers side mounting plate.
2. Using the crank handle assembly, manually unwind the tarp from the roll-up bar a few turns.
3. Go to the rear of the dump body and unlock the rear pull bar for the rear catches.
4. Using the crank handle assembly, turn the assembly until the tarp has completely rolled up onto the roll-up bar.

**⚠ WARNING: Damage to the tarp system, and dump body can occur if the tarp is not totally rolled up onto the roll-up bar. Failure to have the tarp completely rolled up on the roll-up bar could result in damage to person(s) and property.**

5. Reinstall the lynch pin into the washer/collar to lock the crank handle assembly into place by snapping the ring of the lynch pin over the tab on the mounting plate.

## Periodic Maintenance Schedule

### Daily Inspection Requirements:

1. Perform one complete cover, and uncover operation prior to placing equipment in service. Any malfunctions in the tarping system must be repaired prior to the equipment being placed into service.
2. Check for tears and rips in tarp. Repair as needed, or replace as required.
3. Check to assure that the rear pull bar fits into the rear catches properly, and there are no obstructions limiting the rear pull bar from fitting properly into the catches.
4. Check the locking mechanism on the washer/collar located on the drivers side mounting plate. The equipment operator must be able to properly lock the crank handle assembly into position at all times.
5. Visually check to assure no parts are missing from the Roll-N-Pull system.
6. Check the general condition of the equipment visually. Check that there are no obvious signs that may indicate that the tarp system is unsafe.

### Monthly Inspection Requirements:

1. Visually check to assure no parts are missing from the Roll-N-Pull tarp system.
2. Verify all components and mechanisms are not damaged. It is recommended that any missing or damaged parts must be replaced or repaired before equipment is placed into service.
3. Verify all 1/4"-20 x 1/2" phillips-head screws securing the tarp to the tarp roll-up bar are adequately secured.
4. Check the rear pull bar assembly to assure there are no loose or missing pieces, and it is properly secured inside the rear picked on the tarp.

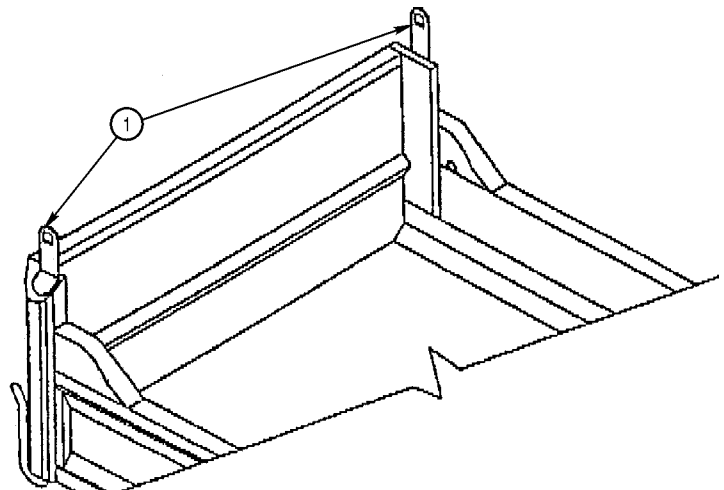
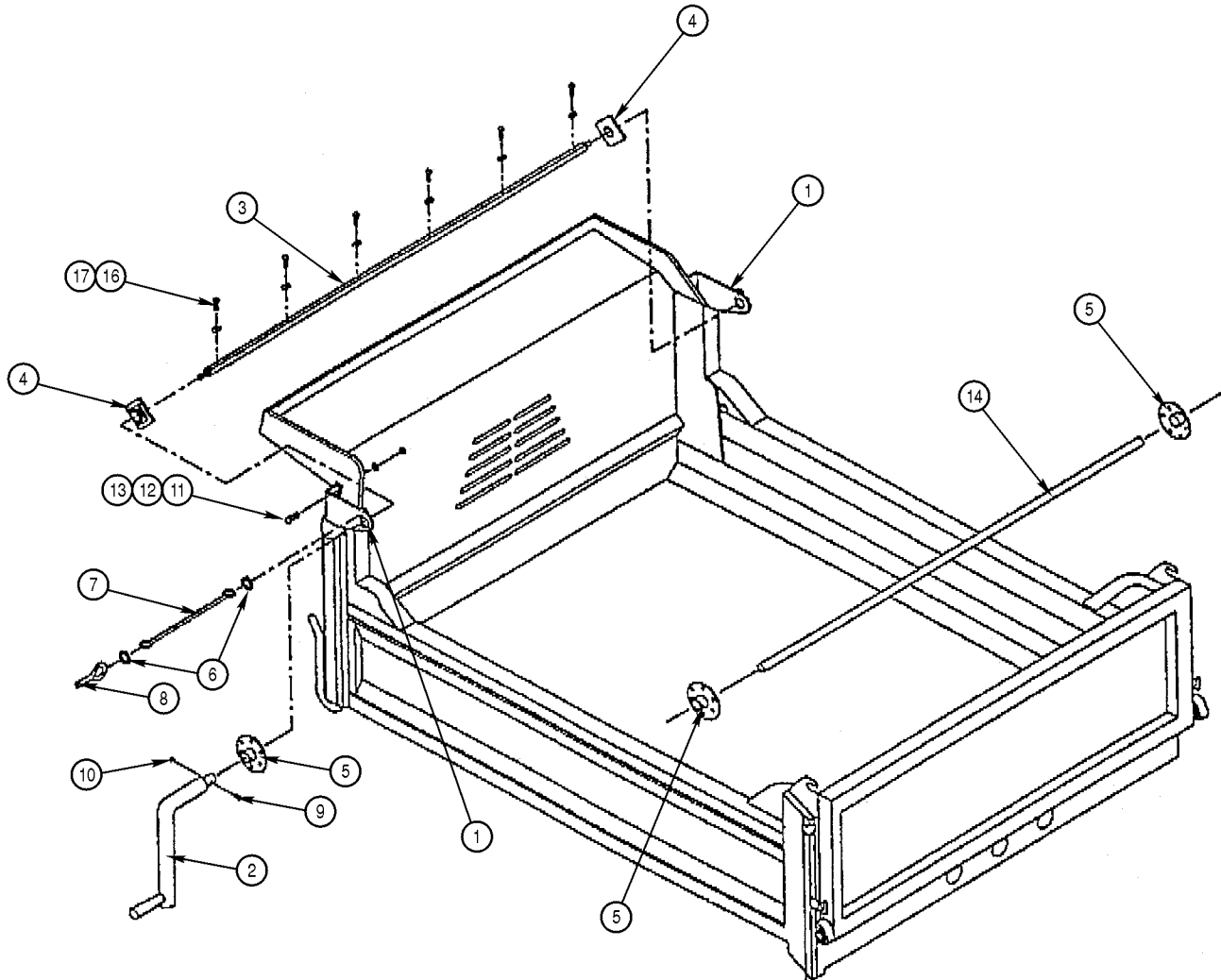


## Safety Recommendations

- It is strongly recommended that the owner/operator of this equipment setup a safety inspection program using safety check sheets, evaluation and reporting, and follow-up corrective action supporting the proper use and maintenance of this equipment.
- It is strongly recommended that the owner/operator of this equipment setup a training program with the operator of this equipment to assure the operator is aware of safety elements, job risks, and emergency procedures of this equipment.
- Do not allow a load of material to be dumped into the dump body when the Roll-N-Pull tarp system is in the covered position.
- Prior to the dump body being elevated, tilted, or moving, assure that the Roll-N-Pull tarp system is secure, and in fully uncovered position.
- Assure that any time the equipment is moving down the road, that the crank handle assembly is securely locked into place.

# Roll-N-Pull

## Roll-N-Pull Parts Drawing



## Roll-N-Pull Parts List

Item No.	Part Description	Part Number	Item Qty.
1	Mounting Plate	0311-863395	2
2	Crank Handle Assembly	0311-961508	1
3	Roll Tube Assembly 78"	0311-960221	1
	Roll Tube Assembly 84"	0311-960222	1
	Roll Tube Assembly 87"	0311-960223	1
	Roll Tube Assembly 93"	0311-960224	1
4	Plastic Bearing Block	0311-863394	2
5	Washer/Collar Pull Bar	0311-863392	3
6	1" Split Ring	0840-618507	2
7	9" Nylon Lanyard	0760-603124	1
8	5/16" x 1-3/8" Lynch Pin	0835-691651	1
9	1/4"-20 x 1-1/4" Hex Head Bolt - Zinc Plated	0810-650477	1
10	1/4"-20 Hex Nut - Zinc Plated - Nylon Insert	0815-660456	1
11	3/8"-16 x 1" Hex Head Bolt -Zinc Plated	0810-670650	4
12	3/8" Flat Washer - Zinc Plated	0810-680620	4
13	3/8"-16 Hex Nut - Zinc Plated - Nylon Insert	0815-660660	4
14	Rear Pull Bar 78"	0311-861308	1
	Rear Pull Bar 84"	0311-861309	1
	Rear Pull Bar 87"	0311-861310	1
	Rear Pull Bar 93"	0311-861311	1
15	Roll-N-Pull Tarp 14' x 76"	ECT1476-CRY	1
	Roll-N-Pull Tarp 14' x 82"	ECT1482-CRY	1
	Roll-N-Pull Tarp 14' x 85"	ECT1485-CRY	1
	Roll-N-Pull Tarp 14' x 91"	ECT1491-CRY	1
16	1/4"-20 x 1/2" Phillips Head Screw	0610-670905	6
17	1/4" Split Lockwasher - Zinc Plated	0820-680725	6
18	1/4"-20 Square Nut - Zinc Plated	0815-660702	6
19	Roll-N-Pull Installation Instructions	0930-861564	1

# You're Covered With Aero!

## WARRANTY

Aero products come with a one year warranty on all parts. It's another example of our ongoing commitment to customer satisfaction and quality.

## CUSTOMER SERVICE

1-800-535-9545

Our customer service technicians are trained to help you. Whether it's ordering, installation, or just general information on our products, you can count on expert advice from Aero.

© 2005 Aero Industries, Inc.  
0930-861564  
12/14/05



**Indianapolis, IN**  
4243 Bradbury Avenue  
Indianapolis, IN 46241  
800-535-9545  
Fax: 317-244-1311

**Omaha, NE**  
I-80 & Highway 50 South  
Omaha, NE 61837  
800-535-9545  
Fax: 402-895-5129

**Streetsboro, OH**  
8540 State Route 14  
Streetsboro, OH 44241  
888-237-2262  
Fax: 330-626-3277

**Burlington, ON**  
3474 Mainway Drive  
Burlington ON L7M 1A8  
800-535-9545  
Fax: 905-335-8499