



SELECT



The Select body program allows you to build your own dump body from our wide selection of materials, lengths, styles, and add-ons. Crysteel's industry exclusive "Build it Your Way" program is more than just a concept — it's a customer-driven ordering system that makes manufacturing to specific requests a reality. Select between traditional square body styles or elliptical bodies, and then choose the best steel for the floor, sides, and ends to fit real-world applications. A complete list of options are available for front design, side height and bracing, tailgate design and understructure. Additional accessories further customize your Crysteel Select dump body such as cab shields, fenders and ladders.

BUILD IT YOUR WAY

Choose from our wide selection of materials, lengths, styles, and add-ons



HOIST OPTIONS

The Select Body can be customized to use Crysteel's premium hoists – both underbody and telescopic.

Roller Combo Hoist:

Patented underbody hoist with subframe designed to provide more power at breakaway and has power to spare at the end of the cycle.



Marathon Telescopic:

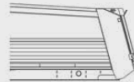
Trunnion mount hoist that offers powerful lifting without wasted doghouse space. Features no-bleed cylinders.



ASPHALT CONTRACTORS

As an Asphalt contractor you need functionality and versatility in the dump body you use. Crysteel offers you both the ability to custom design your body with features like a sloped front that promotes better clean out, as well as an asphalt rear that allows you to pull away from a paver box without lowering your body. Being functionally efficient on the job saves time and improves profit margins.

Asphalt/Sloped Rear



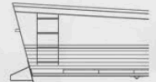
Heated Floors



Asphalt Apron



Sloped Front



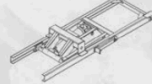
PUBLIC WORKS CONTRACTORS

Providing a clear and concise set of equipment specifications is the key to getting the versatile dump body you need for your fleet. Crysteel can help you develop that perfect body and hoist specification by providing you with key information on different body styles, features and options, plus help you with the types of steel that you need to best deal with the different materials you haul.

Western Understructure



Roller Combo Hoist



Power High-Lift Tailgate



Vibrator



DEMOLITION CONTRACTORS

Designing a dump body to hold up to the rigors of large rock, concrete chunks with rebar, and construction rip-rap requires a little planning and forethought. Crysteel dump bodies can be designed and built to stand up to the toughest stuff you can dish out. All this without sacrificing good looks for performance.

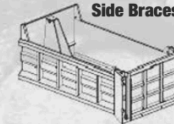
Elliptical



Power High-Lift Tailgate



Vertical & Horizontal Side Braces



Double Panel Tailgate



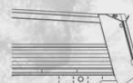
GENERAL CONTRACTORS

You may never know from one day to the next what you might need your dump body to haul. Being able to design a dump body that will handle the tougher loads, yet lighter where it can be, allows you to keep the weight down to maximize the hauling capacity of lighter aggregates. Keeping your costs in line without sacrificing performance can be a challenge, but Crysteel can help you customize a dump body that will fit your application.

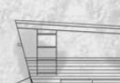
Sloped Sides with Horizontal Side Brace



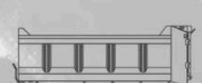
Sloped/Asphalt Rear



Sloped Front



Vertical Side Braces



BACKED BY OUR
5 YEAR
WARRANTY



	SELECT
Lengths:	10' – 21.5' in 6" increments
Side heights:	2" increments
Side style:	Elliptical or square
Front style:	Sloped, straight, or bailmount
Material options:	Carbon, AR, or stainless steel
Rear style:	Sloped or straight
Body capacity:	5 – 20 cubic yards
Understructure:	Western, I-Beam, or interlocking
Additional options:	Cabshields, tarps, vibrators, poly fenders, back-up alarms, and several more

sales@crysteel.com | (800) 533-0494 | crysteel.com